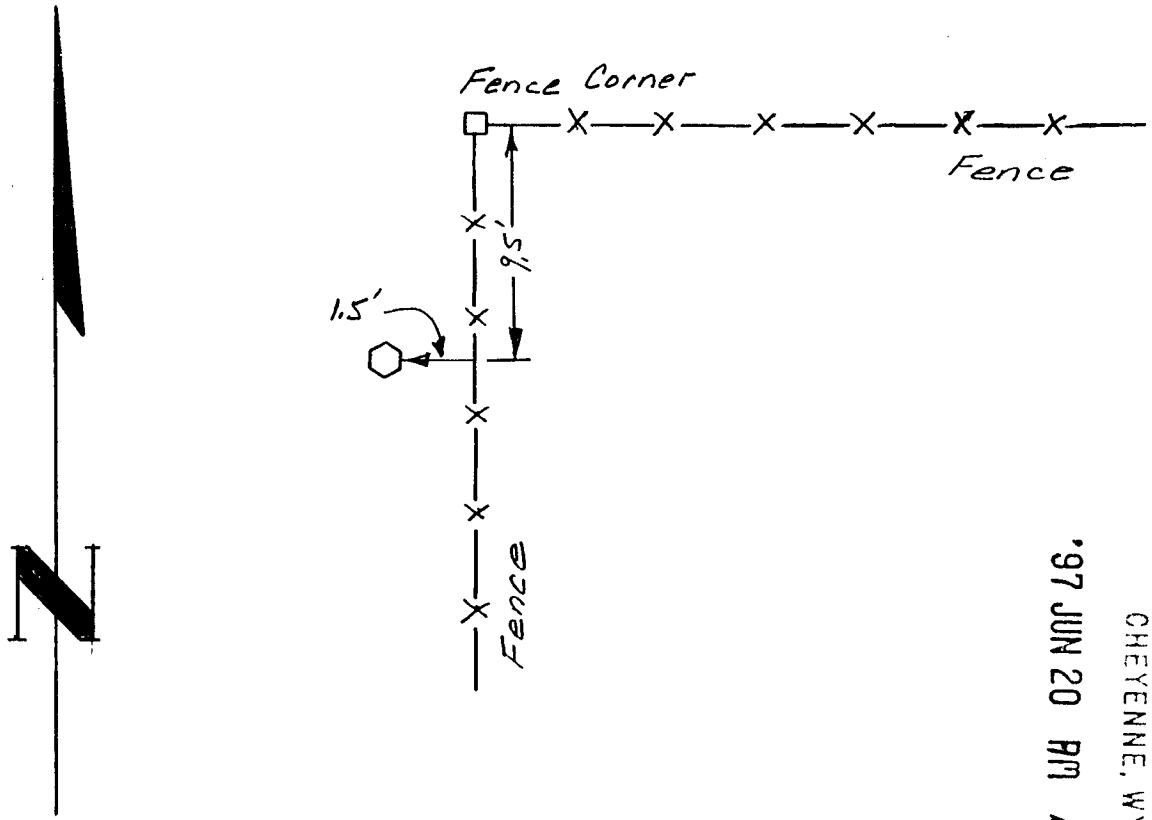


State of Wyoming Corner Record

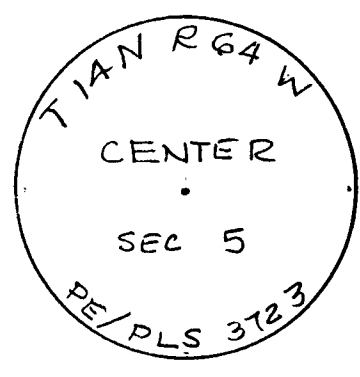
(In compliance with the CORNER PERPETUATION AND FILING ACT, Wyoming Statutes, 1977, Section 36-11-101, et. seq., and the Rules and Regulations of the Board of Registration for Professional Engineers and Professional Land Surveyors.)

Reverse side of this form may be used if more space is needed.

Record of original survey and citation of source of historical information (if corner is lost or obliterated). Description of corner monumentation evidence found and/or monument and accessories established to perpetuate the location of this corner. Sketch of relative location of monument, accessories, and reference points with course and distance to adjacent corner(s) (if determined in this survey). Method and rationale for reestablishment of lost or obliterated corner.



204697
 LARAMIE COUNTY CLERK
 CHEYENNE, WY.
 97 JUN 20 PM 10:19



Stamping

BOOK 1453

0835

Date of Field Work: 19 June 1997 Office Reference: _____

CROSS INDEX DIAGRAM

A	1	2	3	4	5	6	7	8	9	10	11	12	13	14	15	16	17	18	19	20	21	22	23	24	25
B																									
C			6																						
D																									
E																									
F																									
G			7			8																			
H																									
I																									
J																									
K																									
L			18			17																			
M																									
N																									
O																									
P			19			20																			
Q																									
R																									
S																									
T			30			29																			
U																									
V																									
W																									
X			31			32																			
Y																									
Z																									

Firm/Agency, Address
 PREPARED BY:
 Dr. Herbert W. Stoughton
 Geodetic Engineer
 2821 Carey Avenue
 Cheyenne, Wyoming 82001
 (307) 632-7460

This corner record was prepared by me or under my direction and supervision.
 SEAL & SIGNATURE

 20 June 1997